

Fine Features of 328 592 Hooke Rd



Click on text for:

- Colour Brochure

- Floor Plan

- Virtual Tour

- Optimized tour for Cell Phone

- Map of Home



Bruce MacPherson, B.Sc., B.A.

**“Relocation Specialist”
Real Estate Professional**

Bus: (780) 481-9060

View this home at: www.EdmontonHouses.com

E-mail: Bruce@EdmontonHouses.com

*Not intended to solicit properties already listed for sale

ROYAL LEPAGE

Noralta Real Estate



2008

*Prestigious recognition
awarded to the TOP 1%
Royal LePage Real Estate
sales representatives in 2008.*

Welcome to 328, 592 Hooke Road



Canon Ridge



BRUCE MACPHERSON, B.Sc., B.A.

“Relocation Specialist”

Real Estate Professional

Bus: 780-481-9060

View this home at: www.EdmontonHouses.com

Email: Bruce@EdmontonHouses.com

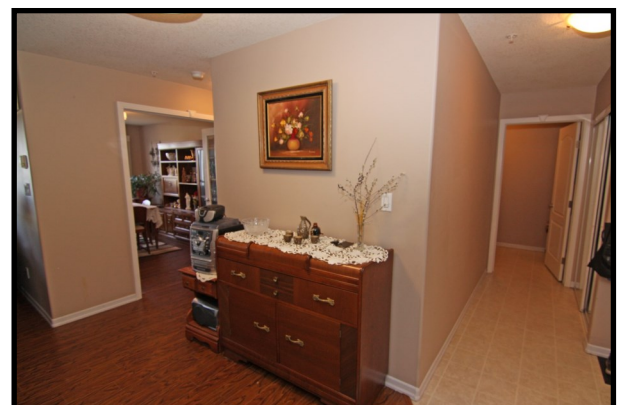


ROYAL LEPAGE

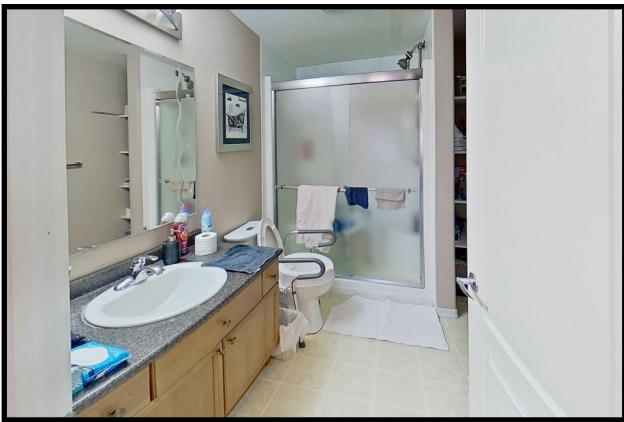
Noralta Real Estate

Prestigious recognition awarded
to the **TOP 1%** nationally of
Royal LePage Real Estate sales
representatives in 2008.

Not intended to solicit properties already listed for sale



Find Your Home on the Web at: www.EdmontonHouses.com



328, 592 Hooke Road



BRUCE MACPHERSON, B.Sc., B.A.

“Relocation Specialist”

Real Estate Professional

Bus: 780-481-9060

View this home at: www.EdmontonHouses.com

Email: Bruce@EdmontonHouses.com



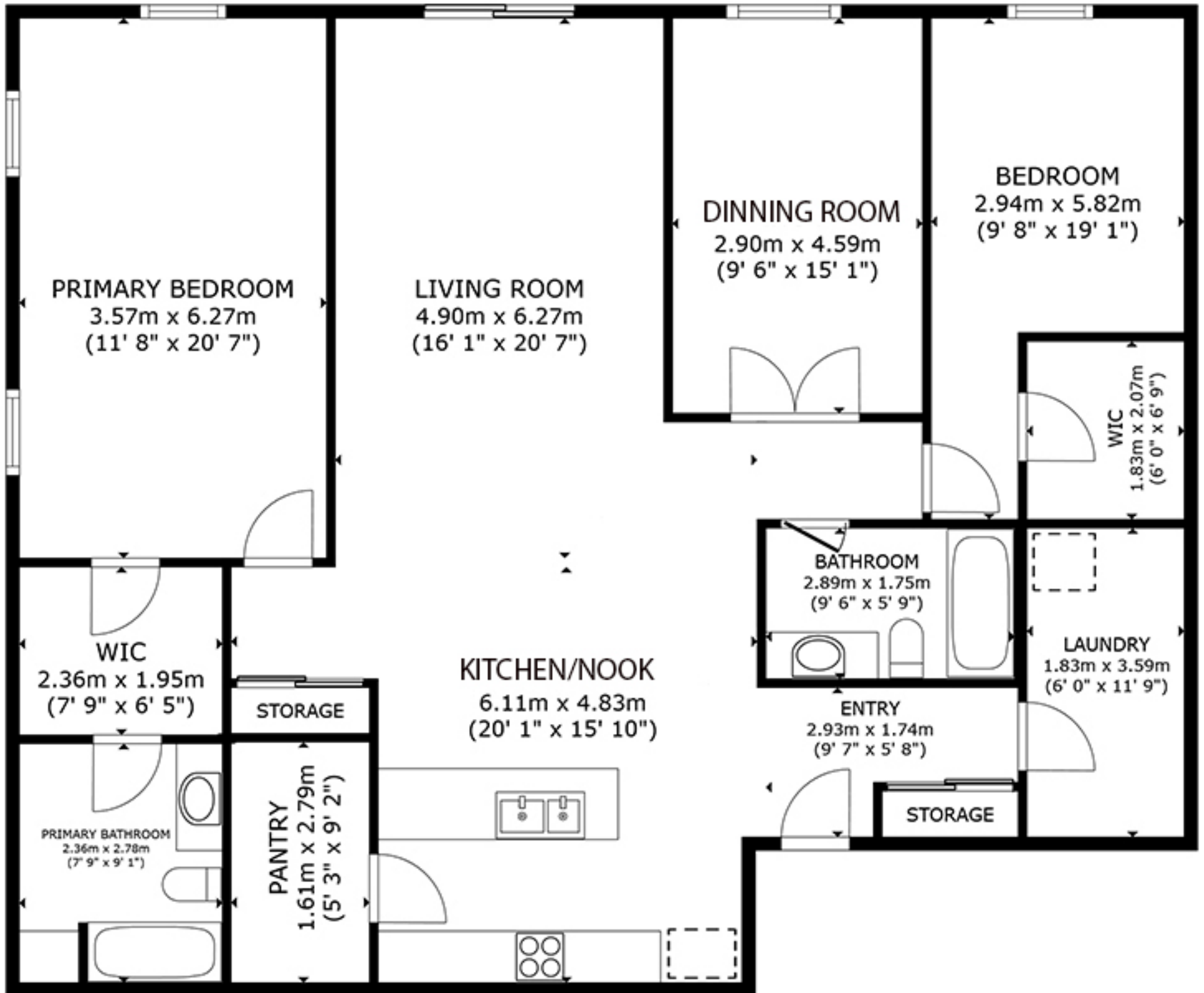
ROYAL LEPAGE
Noralta Real Estate

Prestigious recognition awarded to the **TOP 1%** nationally of Royal LePage Real Estate sales representatives in 2008.

Find Your Home on the Web at: www.EdmontonHouses.com

328, 592 Hooke Road





FLOOR PLAN

GROSS INTERNAL AREA
 FLOOR PLAN 142.8 m² (1,537 sq.ft.)
 TOTAL : 142.8 m² (1,537 sq.ft.)

SIZES AND DIMENSIONS ARE APPROXIMATE, ACTUAL MAY VARY.